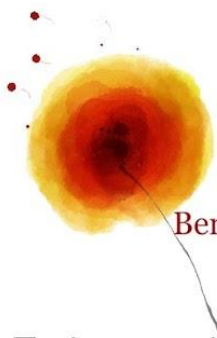


# BAASS Existential Photographic Exhibition

## Opening and Venue Information



Bendigo Autistic Advocacy  
and Support Service *presents...*

### Existential Photographic Exhibition

Public opening with Jeanette Purkis

Author, speaker, radio presenter, & passionate advocate.

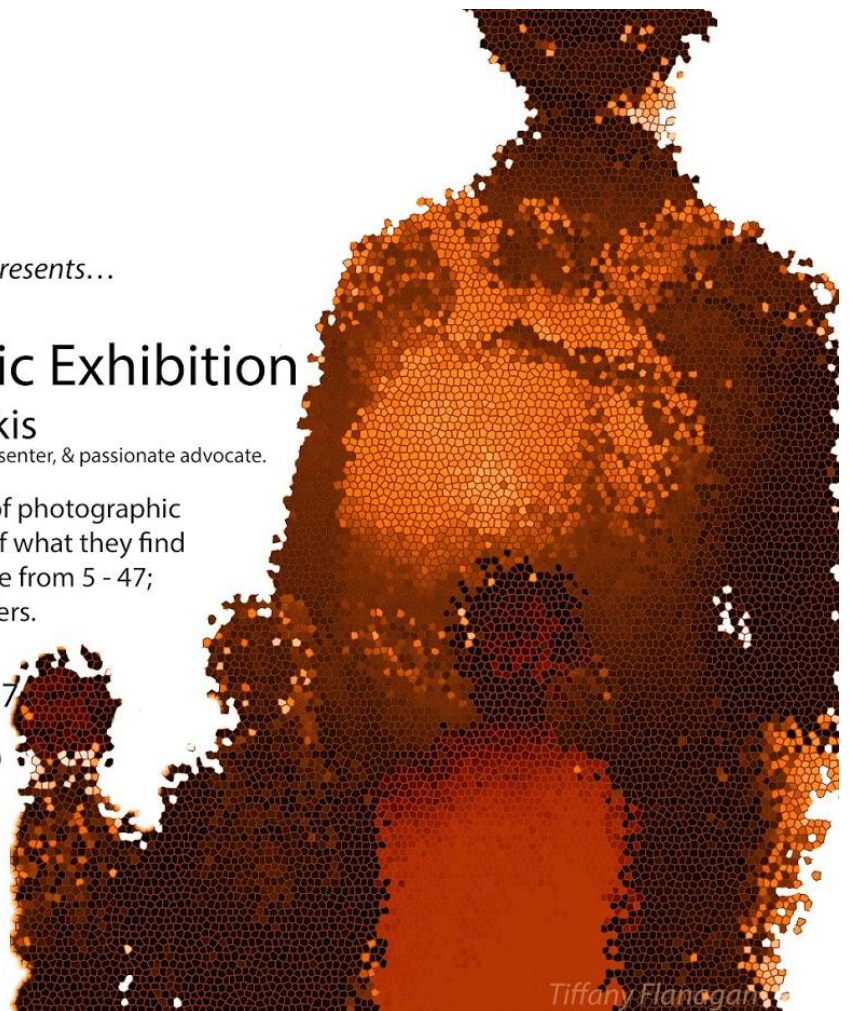
An explorative art exhibition using a range of photographic  
mediums to capture the artist's impression of what they find  
beautiful & fascinating. Artists range in age from 5 - 47;  
some are first time photographers.

6pm-8:30pm Saturday 23 September 2017

Dudley House, 60 view street Bendigo

RSVP: by 8th September 2017  
[bendigoautisticadvocacy@gmail.com](mailto:bendigoautisticadvocacy@gmail.com)

With thanks to...

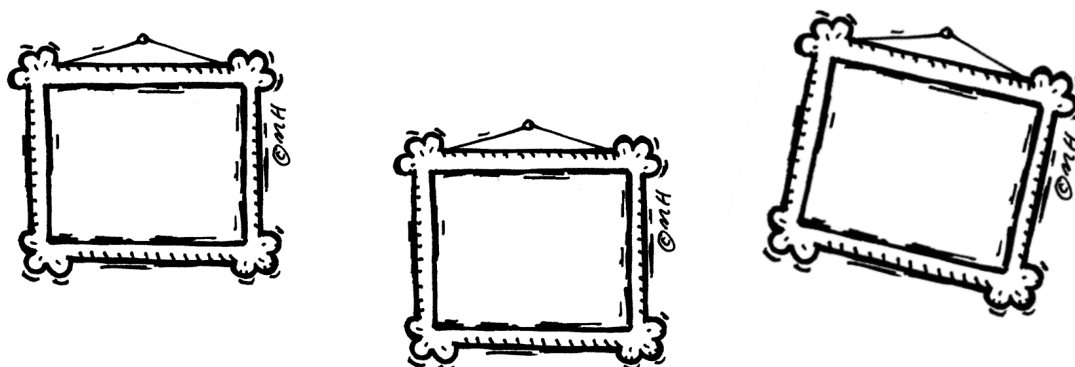


*Tiffany Flanagan*

Bendigo Autistic Advocacy and Support Service (BAASS) is having an exhibition.

Our exhibition is called 'Existential Photographic Exhibition'.

Lots of people have taken photos to be part of the exhibition.

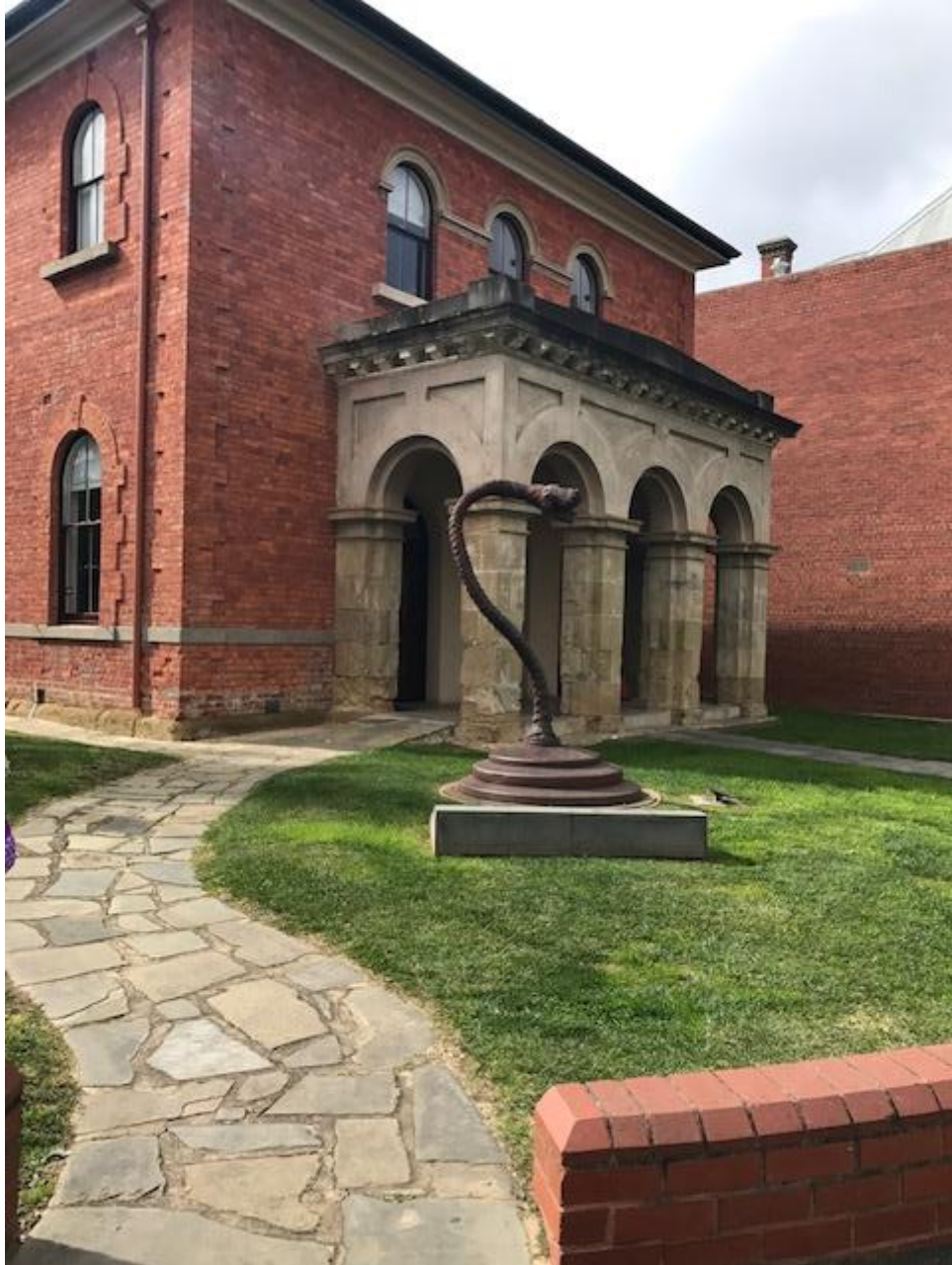


Our exhibition will have lots of different photos and pictures to look at.

We have a booklet about the opening of the exhibition, that you can read too.

The exhibition is at a place called Dudley House.

This is what Dudley House looks like.



Dudley House is a gallery. A gallery can have art displayed for people to look at.





There are small steps at the front

There is a smooth path at the front too.

Dudley House looks like this inside the front door.



It will look a bit different at the exhibition.

There will be lots of framed photos on the walls.



The toilets are straight ahead from the front door.



This is the toilet area.



There is lots of space.



There is a door next to the toilet door.

It leads to a kitchen.





This is the kitchen.



There will be snacks available in the kitchen. The snacks will be gluten free, vegetarian and nut free.

There will also be tea, coffee and juice.

**Please do not eat or drink in the gallery spaces.**

From the kitchen, there is another gallery space.

There will be more photos on the walls here.

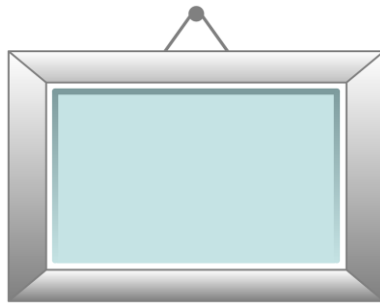


Toilets

Kitchen and second exhibition room



The pictures in the exhibition will be inside frames.



Some of the pictures will have a small card next to them, with some information about the artist.

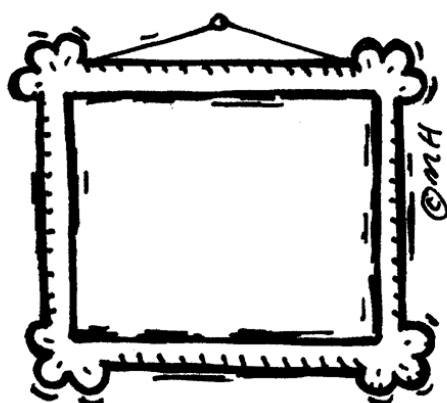
For example:

*Azalea Flora*

*Azalea delights in capturing memories around them and exploring with different filters with iPad and digital camera.*



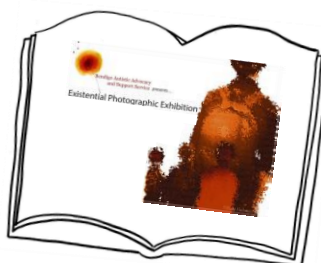
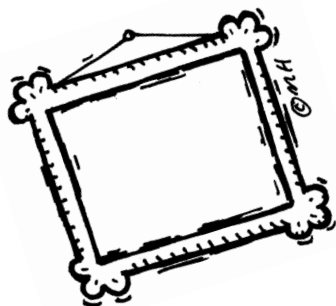
The framed photos in the exhibition, will be gifted to the artists, after the exhibition.



There will also be a book of all of the photos from the exhibition.

Two copies will be at the exhibition for you to look at.

Anyone can order copies of the photos and the book.



There will be an order list and someone will place your order.

Images cost \$25 each

Books cost: \$35 each



You must pay a cash deposit to order an image or book.



Images: \$10 deposit, per image, at time of order

Books: \$11 deposit, per book, at time of order

Framing of any images is an additional cost.

The exhibition is open every day for eleven days.



The exhibition is open to visit, each day from  
Sunday 24<sup>th</sup> September 2017

**10am until 4pm**

Anyone can visit the exhibition during the 11 days



The last day of the exhibition is Tuesday 3<sup>rd</sup> October, closing at 4pm.

We are so excited about this exhibition and can't wait to see you there!

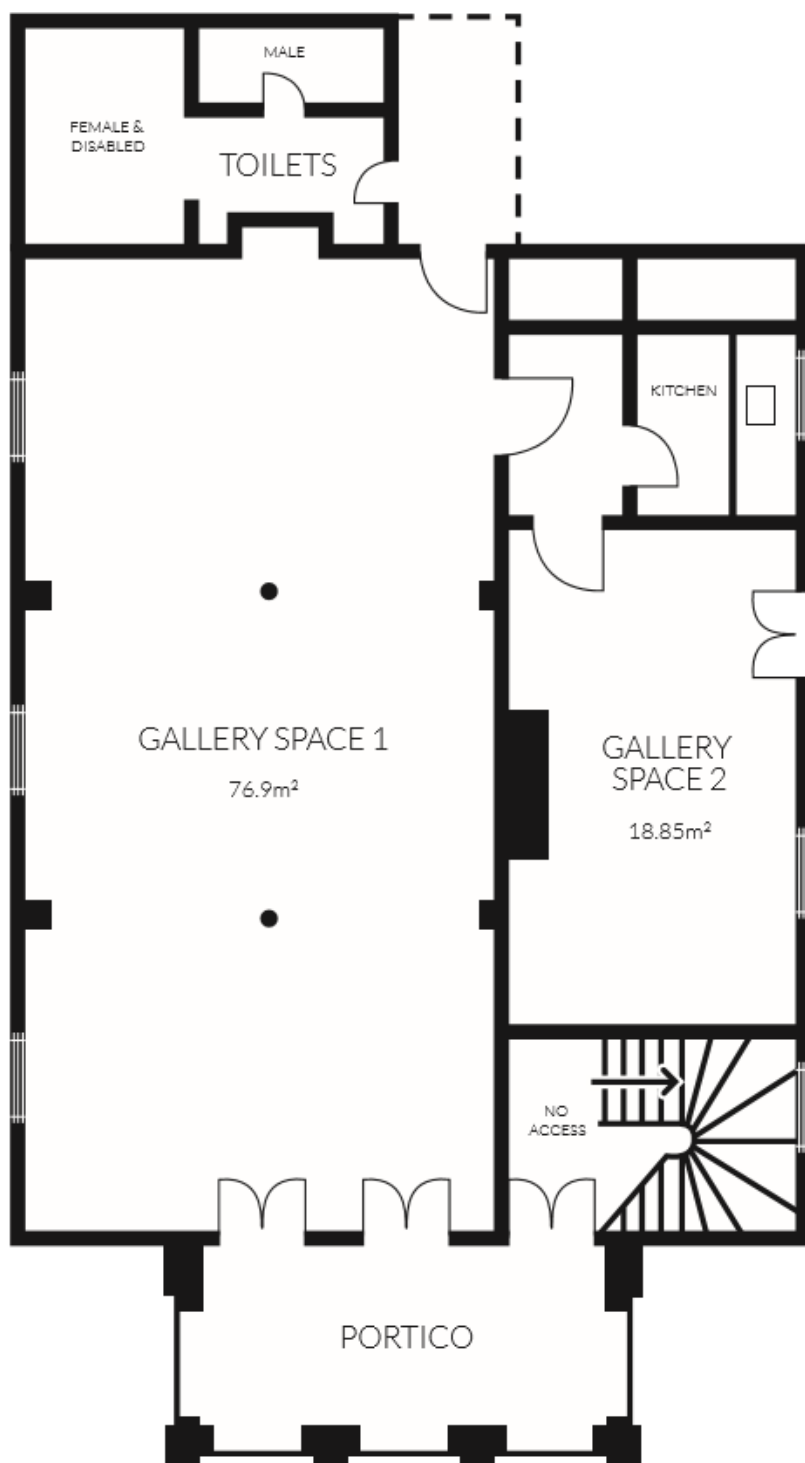
## Dudley House

Here are links to some more Dudley House information.

<http://www.studiosgalleriesofbendigo.com/dudley-house.html>

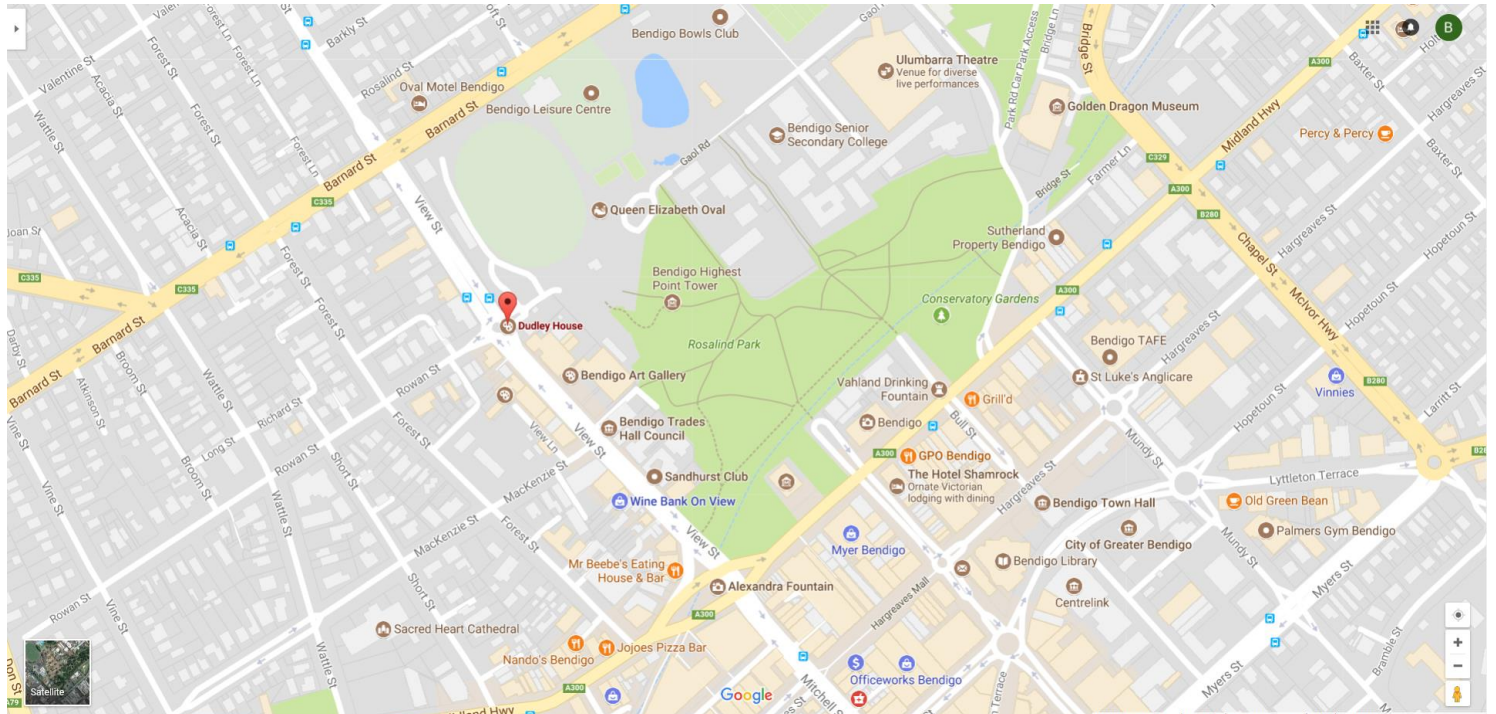
<https://www.bendigo.vic.gov.au/About/Document-Library/dudley-house-brochure>

### Dudley House floorplan





## A map showing Dudley House and surrounding areas



The link to the map is here:

<https://www.google.com.au/maps/place/Dudley+House/@-36.7573527,144.2786513,17z/data=!4m5!3m4!1s0x0:0xce148b0bcc9bb02d!8m2!3d-36.7569835!4d144.2756259>

## Parking

There are lots of options for parking near Dudley House.

Please make sure you check the signs carefully.

Some parking has time limits.

You may have to buy a ticket to park during certain times.

Some options are

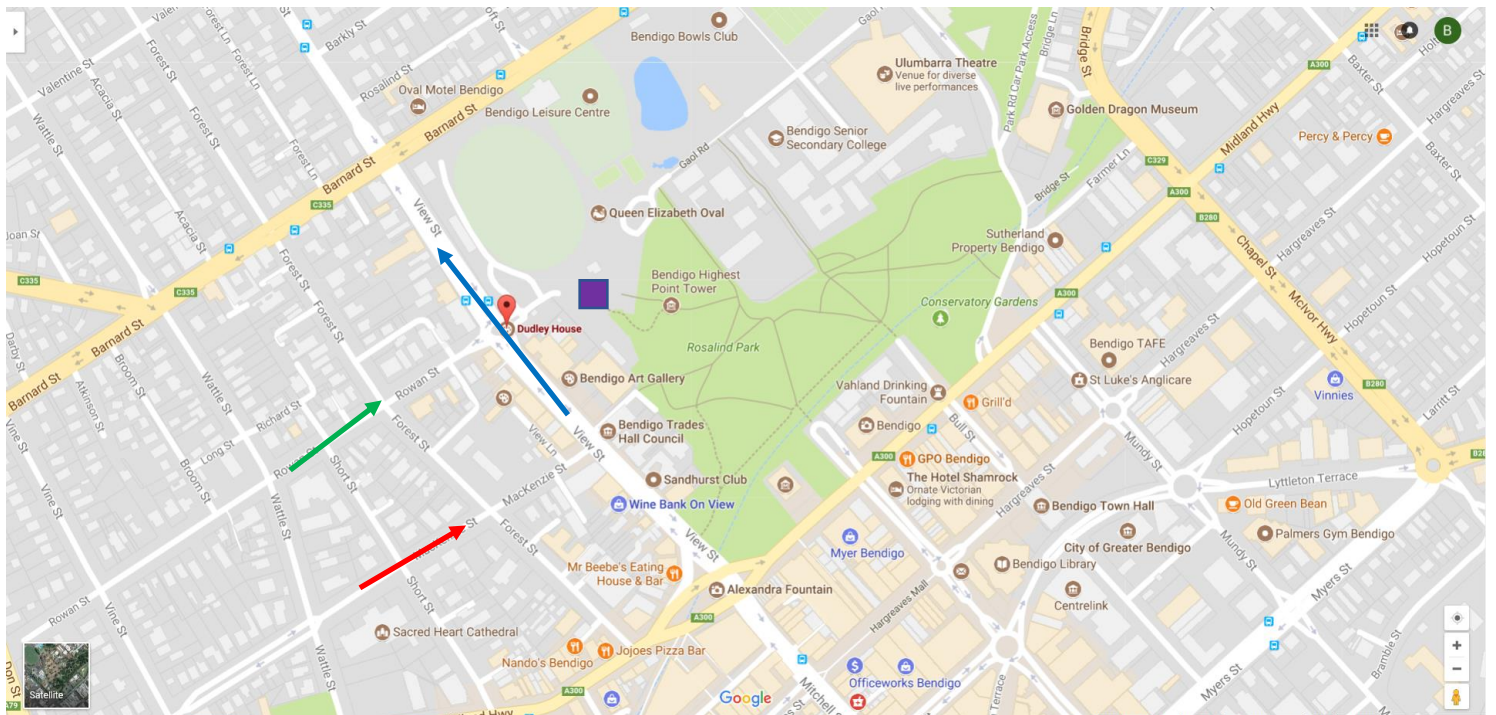
View Street ■

QEO parking ■

Rowan Street ■

McKenzie Street ■

And other nearby areas.



Here is a link to parking information:

Bendigo CBD parking map

<https://www.bendigo.vic.gov.au/About/Document-Library/bendigo-cbd-car-parking-map>

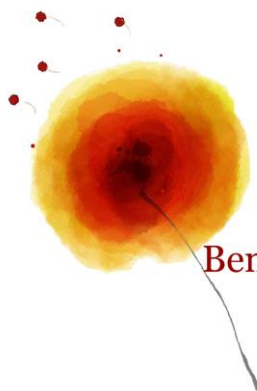
# Thank you

**BAASS Co-Convenors wish to thank the artists and their loved ones, for your participation in this wonderful exhibition.**

**Thank you also, to our supporters and to everyone showing their support by visiting and purchasing from our exhibition.**

We also extend heartfelt gratitude to our own families, who have supported us through the many hours of preparation in bringing this exhibition to our amazing community.

Beck, Susanna and Tony



**Bendigo Autistic Advocacy  
and Support Service**



Do not reproduce or use any part of this document for any purposes other than its original intent. This visual guide remains the property of Bendigo Autistic Advocacy and Support Service and has been developed as a resource for our Existential Photographic Exhibition artists, stakeholders and anyone visiting the exhibition.

If you would like a booklet about any other aspect of the exhibition and processes, please contact Bendigo Autistic Advocacy and Support Service at [bendigoautisticadvocacy@gmail.com](mailto:bendigoautisticadvocacy@gmail.com)

### Image credits

<http://moziru.com/>  
Frame clipart art Image #2179  
<http://www.okclipart.com/>  
<http://www.clipartpanda.com/>  
<http://diysolarpanelsv.com/>  
<https://pixabay.com/>  
<http://www.clipartpal.com/>  
[www.cliparting.com/](http://www.cliparting.com/)